

GBG Australia

SUB SURFACE PROFILING

200 Goulburn Street, Surry Hills NSW — Cadence (2008)

Murwillumbah, NSW-Tweed Head Council (2008)

Jandakot Airport, WA — McMullan Nolan (2008)

CBD 3B Streetscape Project, York Street, Sydney — City of Sydney (2008)

Strathgordon Village, TAS — Hydro Tasmania Consulting (2008)

Subsurface investigation of dipping structures on sections of Ryde Road, Sydney, NSW — Transfield Services (2008)

The Great Synagogue, Sydney, NSW — Morgan Moore and Associates (2008)

Bourke Street, Docklands, VIC — Australian Broadband Company, (2008)

Various areas on North Sydney Road Network, Sydney, NSW — Pioneer Road Services (2008)

200 George Street, Sydney, NSW — Mirvac (2008)

Hunter Street, Sydney, NSW — Mirvac (2008)

King & Druiett Street, Sydney NSW — City of Sydney (2007)

Sydney

18 Fennell Street.
North Parramatta 2151 NSW
Telephone: 02 9890 2122
Fax: 02 9890 2922

Contact

Simon Williams
simon@gbgoz.com.au

Perth

2nd Floor, 2 Hardy Street.
South Perth 6151 WA
Telephone: 08 6436 1599
Fax: 08 6436 1500

Contact

Rob Hunn
rob.hunn@gbgmaps.com.au

Website
www.gbgoz.com.au

Applications for SUB SURFACE INVESTIGATIONS TO LOCATE UNDERGROUND SERVICES

Ground Penetrating Radar is a non-invasive profiling technique which provides high resolution images of the subsurface. Its ability to detect ground disturbance and buried objects make it ideal for locating services. GBG Australia have undertaken such investigation to great effect for the following purposes:

Development sites— ensure that a site proposed to be developed, services are located, to prevent any obstruction to existing services.

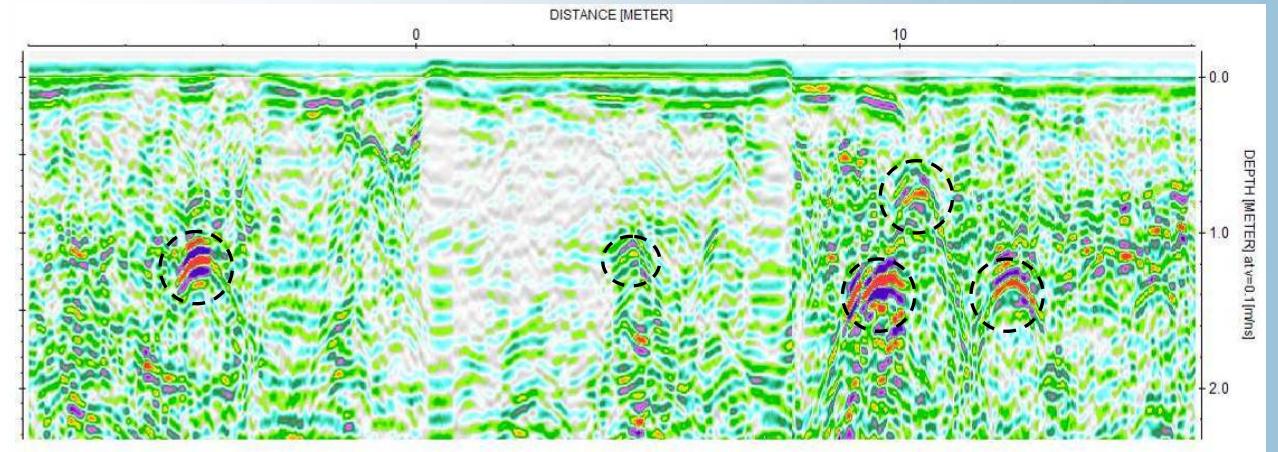
Construction sites— determine the extent of services within the concrete for old and new building prior to core penetrations of redevelopment of any one area.

Information available from sub surface profiling

- Location of utilities
- Construction layer thicknesses
- Construction layer changes
- Asphalt delamination and condition
- Void location or areas of deconsolidation
- Variations in moisture content within bound and unbound layers
- Location of floaters or large boulders within the sub-grade



Non Destructive Techniques for SUB SURFACE INVESTIGATIONS TO LOCATE UNDERGROUND SERVICES



GBG Australia

GBG Australia is a specialist in applying non-destructive investigative techniques to a wide range of environmental and engineering applications. Employing engineers and geophysicists of considerable experience, GBG provides advanced subsurface solutions using a variety of non-destructive and geophysical techniques. The non-destructive profiling of pavement structures using Ground Penetrating Radar (GPR) has been successfully undertaken by GBG for over fifteen years.

Company Expertise

GBG Australia is a subsidiary of the GBG Group, a multi-national company specialising in the application of geophysical and advanced applied physics for precision investigations of geotechnical, environmental sites and engineered structures in UK and Europe since 1982. GBG has had a presence in Australia since 1993 originally through a joint venture with CMPS&F and GHD before becoming a stand alone company in 2003, operating in three main areas of business; geotechnical and environmental investigations and non destructive investigation of structures and contracting of staff and / or equipment for data collection or processing and interpretation of data.

GBG Australia is an independent provider of non destructive and shallow geophysical investigation services with applications ranging from the location of a single pre-stressing strand in a concrete slab to mine scale exploration geophysics. With clients ranging from Local to Federal Government, and from developers and engineering companies to private individuals, we can provide tailored solutions to your particular subsurface investigation requirements.

